

# V-Slim Dotless II (3.8W/meter type)

Ultra-slim profile of just W8.1 mm(max.point) x H12mm with built-in plug-in connector that allows head-to-head fixture-to-fixture connection with seamless lighting effect.

Suitable for cabinet, niche lighting or other furniture applications.

DC24V

3.8W/m

Indoor  
IP44

Ra90 min.  
Applicable for all CCT  
including 1800K  
2000K 2500K

Dimmable  
(DMX, DALI,  
0-10V)

12W/m available

(⇒ Refer to the separate catalog spec)

R9 90, CRI Ra98(typical) is available as semi-custom spec



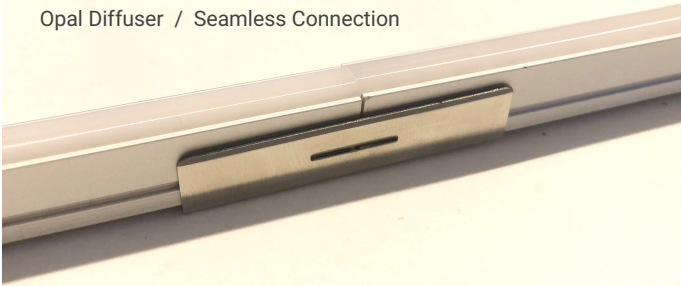
Upgraded fixture-built-in connector for V-SLIM DOTLESS II with locking function

## FEATURES

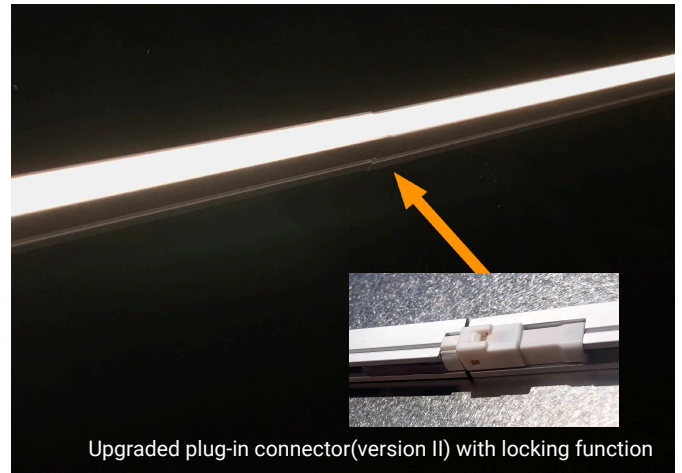
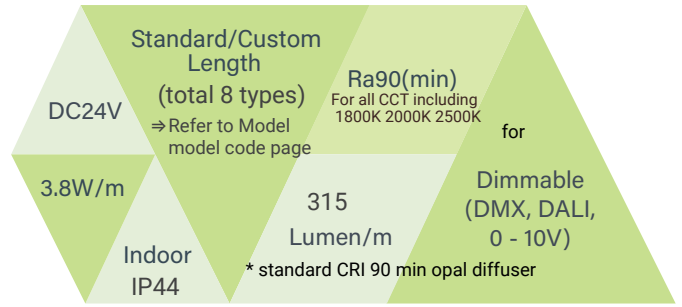
- Ultra-slim profile W8.1mm x H12mm.
- Built-in connector that allows head-to-head seamless connection.
- Available in CCT 1800K 2000K 2500K, 2700K, 3000K, 3500K,4000K
- Reliable/High-efficiency NICHIA LED chip with reverse-polarity protection circuit.
- Minimized voltage drop due to wires running through the whole housing.



Opal Diffuser / Seamless Connection



## BASIC SPECIFICATION



Upgraded plug-in connector(version II) with locking function

## PRODUCT SPECIFICATIONS

Product Name	V-Slim Dotless II (3.8W/meter)				
Model No.	VSDII0331-XXXX-3.8W	VSDII0661-XXXX-3.8W	VSDII0826-XXXX-3.8W	VSDII0991-XXXX-3.8W	VSDII1156-XXXX-3.8W
Input Voltage	24Vdc	24Vdc	24Vdc	24Vdc	24Vdc
Power Consumption	1.3 W	2.5 W	3.1 W	3.8 W	4.4 W
Dimension (mm)	331*8.1*12(H)	661*8.1*12(H)	826*8.1*12(H)	991*8.1*12(H)	1156*8.1*12(H)
Weight	65 grams	127 grams	121 grams	181 grams	209 grams
Casing Body	Aluminium Heatsink with UV-resistant Polycarbonate Semi-Frosted Diffuser				
LED Beam Angle	110°	110°	110°	110°	110°
Operating Temperature	-10°C~50°C	-10°C~50°C	-10°C~50°C	-10°C~50°C	-10°C~50°C
Max. Length of Series Connection	5 meter	5 meter	5 meter	5 meter	5 meter
Option Parts	Metal Mounting Bracket 0° (Flat) Type / or Fixture-built-in magnet				
No of LEDs	84	168	210	252	294
Power Supply Unit (Gear-Driver)	Constant-Voltage Switching Power Supply (TDK Lambda, Sold Separately)				
Lumens (typical @ CCT 2700K)	104lm	208lm	260lm	313lm (=315lm per meter)	364lm

Lumen flux of R9 90, CRI Ra98(typical) semi-custom spec is approx14% lower than standard spec.

MODEL NO

Model No

VSDIIXXX - XXXX - 3.8W-XX

Fixture Type & Fixture Length

Color Temperature

NONE: Standard spec  
OS: R9 90, CRI Ra98(typical)  
(semi-custom spec)

Fixture Type & Fixture Length

- VSDI1156 → V-Slim Dotless II L1156mm
- VSDI0991 → V-Slim Dotless II L991mm
- VSDI0826 → V-Slim Dotless II L826mm
- VSDI0661 → V-Slim Dotless II L661mm
- VSDI0331 → V-Slim Dotless II L331mm

*\* Above stated fixture length does not include connectors.*

Other custom-length: L854mm / L579mm / L249mm / L221mm

Color Temperature

- 40XX → LED Color 4000K
- 35XX → LED Color 3500K, Build-to-order
- 30XX → LED Color 3000K
- 27XX → LED Color 2700K

Other CCT available (Build-to-order): 1800K, 2000K 2500K 4500K 5000K

*\* The last two code "XX" stands for color binning code  
(by NICHIA Japan's LED binning) as per MacAdam Step 3 basis*

LED Color Rendering

Standard is CRI Ra90 (min)  
(for all CCT including 1800K 2000K 2500K)

Example

VSDI0331 - 27XX - 3.8W

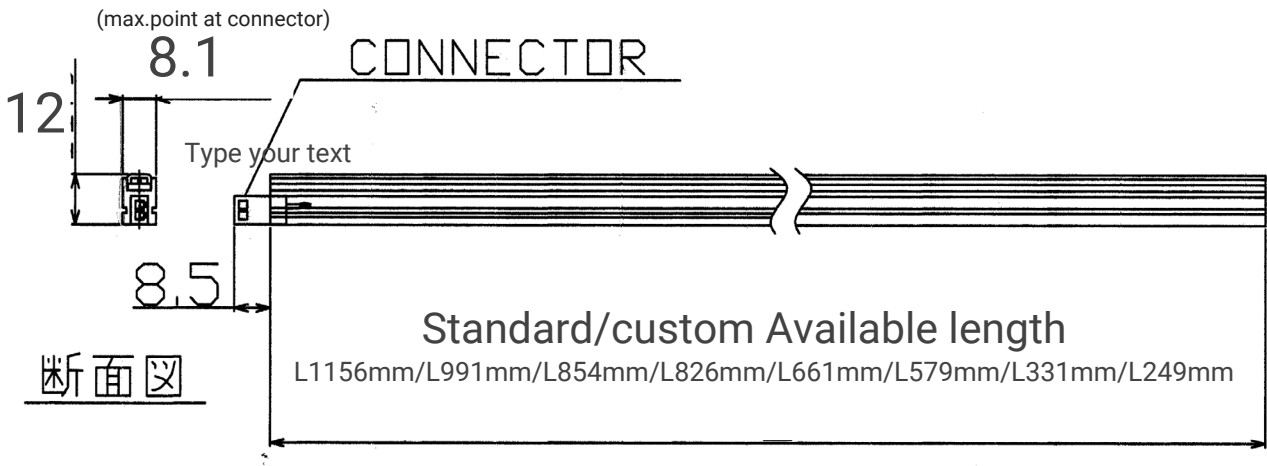
Fixture Type & Fixture Length

Color Temperature

V-Slim Dotless II L331mm

LED Color 2700K

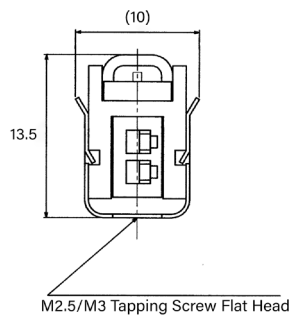
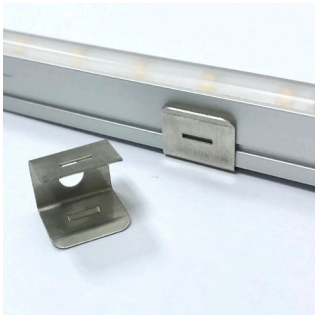
## MECHANICAL DRAWING



## OPTIONAL ACCESSORIES

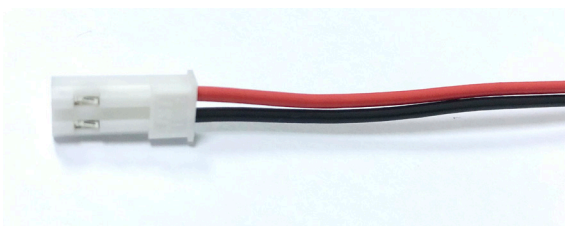
### 1 Mounting Clip Bracket 0° Flat Type

Model: MMC-VS-0DEG



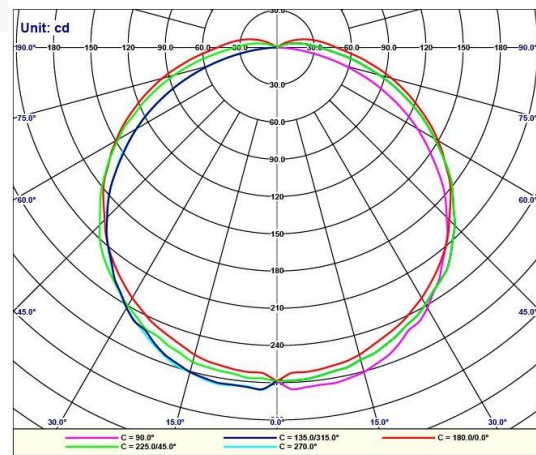
### 2 Male Harness Connector with L500mm Cable

\* Required for first LED Fixture leading to PSU driver



## PHOTOMETRICS

### BROWNIE Lab 190214



Model: VSD1147-27XX (L1147mm, 3.8W/m, CCT2700K CRI Ra90min)  
Luminaire Lumen: 362lm

### 3. Magnet (Fixture Built-in)



### 4. Metal Plate for magnet installation

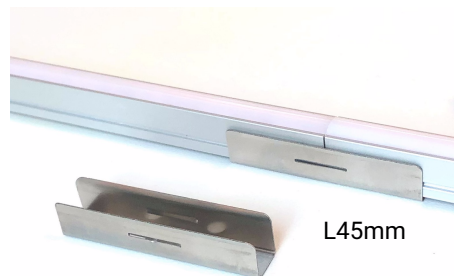
Two(2) types available: 0deg flat and 30deg tilted type



+ Dimension: L75mm x W7.6mm x thickness 2.0mm  
+ With tapping screw (flat head) 2pcs per plate

### 5. Fixture-to-fixture Bracket

Model: MMC-VS-L45



+ Use M2.5/M3 flat head tapping screw (x 2points)  
+ The same profile dimension as metal mounting clip 0deg